

NEW YORK  CLASSICAL THEATRE  
Actors' Testimonials



**Joshua Decker**

*The Feigned Courtesans*  
(2003-2004)

*As You Like It* (2004-2005)

*Love's Labour's Lost* (2006-2007)

“First and foremost, and to risk speaking in cliché, it's a family, not just a group of actors getting together to put up a production. I have worked over and over again with some actors who, in addition to being great human beings, have become great friends.

Secondly, in addition to its obvious success, that success has, quite simply, inspired the Artistic Director, Stephen Burdman, to take even better care of the actors.

Plus, you get to hang out at one of the most beautiful places in the park. Who could really ask for more?”



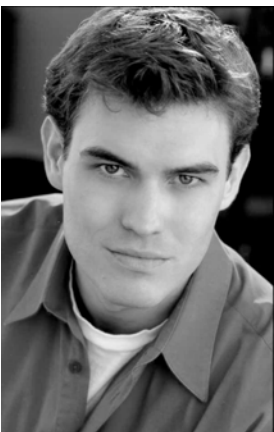
**Erik Gratton**

*Scapin* (2004-2005)

*The Recruiting Officer* (2006-2007)

“Since our rehearsals are open to the public, we usually have plenty of audience response while we're playing with different ideas. I think it makes the whole process much more fun.

It's the most diverse audience I've ever performed for. Huge, active crowds that jump right in and travel through the park with us.”



**Shad Ramsey**

*The Triumph of Love* (2002-2003)

*The Feigned Courtesans* (2003-2004)

*The Comedy of Errors* (2005-2006)

*The Recruiting Officer* (2006-2007)

“I've had the opportunity to do four shows with New York Classical Theatre and it keeps getting better each time. I've worked with great people and in a unique and challenging environment. I've enjoyed watching this company grow and develop each year and it's been a privilege to be part of it. It's also just plain, good ol' fashioned fun!”



**Jenn Schulte**

*The Triumph of Love* (2002-2003)

*As You Like It* (2004-2005)

*Love's Labour's Lost* (2006-2007)

“A wonderful chance to flex your acting muscles in ways you never thought possible! Stephen has such respect for actors and provides us with a veritable playground of opportunities. The audiences continue to grow each year and the support is tremendous!”



**Taylore Mahogany Scott**

*Scapin & As You Like It* (2004-2005)

*All's Well That Ends Well* (2005-2006)

“While other theatres merely stage performances, New York Classical Theatre took the time to teach, train, and encourage its actors during the rehearsal and performance process: not something you get from a major outlet of classical and outdoor theatre. Working with New York Classical Theatre was one of the most fulfilling acting opportunities I have had in New York! “



**Jeffrey Woodard**

*All's Well That Ends Well* (2005-2006)

*Love's Labour's Lost* (2006-2007)

“How does performing in front of say, 6, 7 or 800 people on a given night sound? Sounds like fun to me! Especially when one of those people might be a 7 year old kid that decides to join you on stage during your soliloquy! New York Classical Theatre is a unique experience in itself, and one that affords the working, professional actor the opportunity to share Shakespeare's greatest stories with an audience who is eager for and open to, new and exciting interpretations in a natural environment that is Central Park. Audition!... it's a blast!”